

**MICHIGAN
INDEPENDENT
CITIZENS
REDISTRICTING
COMMISSION**



COMMISSIONERS



WHAT IS REDISTRICTING?



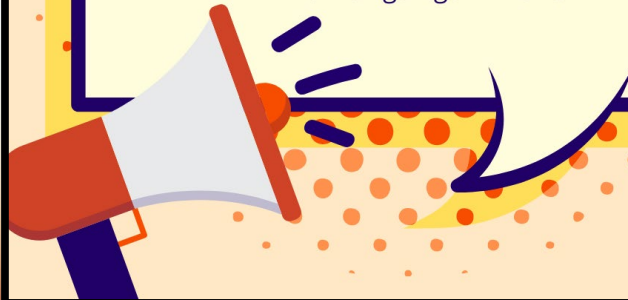
Redistricting happens once every 10 years and affects who you can vote for.

Learn More at www.Michigan.gov/MICRC
#ShowUpSpeakUp



For The First Time In Michigan Citizens Have A Say In How New Voting Maps Are Drawn!

Learn How To #ShowUpSpeakUp At www.Michigan.gov/MICRC



Residents get to help draw maps AND have a say about which areas should be represented.

Learn More at www.Michigan.gov/MICRC
#ShowUpSpeakUp



WHY SHOULD YOU CARE?



**Redistricting Is Your
Chance To Make Sure**

Your Voice

**And Your
Community's
Voice**

Is Heard And Represented

Learn How At www.Michigan.gov/MICRC
#ShowUpSpeakUp

MICHIGAN
INDEPENDENT
CITIZENS
REDISTRICTING
COMMISSION

**Redistricting can keep your
community together!**

#ShowUpSpeakUp

On behalf of your community.
Learn how at www.Michigan.gov/MICRC

MICHIGAN
INDEPENDENT
CITIZENS
REDISTRICTING
COMMISSION

**Redistricting will help make
sure your elected officials
reflect your values on
important issues such as...**

Healthcare

Education

Public Safety

Justice

Learn more at www.Michigan.gov/MICRC
#ShowUpSpeakUp

MICHIGAN
INDEPENDENT
CITIZENS
REDISTRICTING
COMMISSION

REDISTRICTING BREAKDOWN



In 2020, U.S. Census reported Michigan's population as 10,077,331 people.

Michigan's 161 districts that will need to be drawn include:

- 13 Michigan Congressional—average of 775,200 people per district
- 38 Michigan Senate—average of 265,200 people per district
- 110 Michigan House—average of 91,600 people per district



REDISTRICTING CRITERIA

1. Equal population and Voting Rights Act
2. Geographically contiguous
3. Reflect State's diversity & Communities of interest
4. No disproportionate advantage to any political party
5. No favor or disfavor to an incumbent elected official or a candidate
6. Reflect consideration of county, city, and township boundaries
7. Reasonably compact



PUBLIC HEARINGS



PUBLIC COMMENT PORTAL

A screenshot of the public comment portal interface. It features a diverse group of smiling people on the left. On the right, there is a text box with the heading "WE WANT TO HEAR FROM YOU!" followed by the text "Use the Commission's Online Public Comment Portal to:" and a bulleted list of three options: "Draw and share your District Maps or Community of Interest", "Write Public Comment", and "Comment on Other Maps". Below the list is a button labeled "SUBMIT PUBLIC COMMENT".

WE WANT TO HEAR FROM YOU!

Use the Commission's Online Public Comment Portal to:

- Draw and share your District Maps or Community of Interest
- Write Public Comment
- Comment on Other Maps

SUBMIT PUBLIC COMMENT

www.Michigan.gov/MICRC



MAPPING PROCESS

- Commission drafting maps for the 13 Michigan Congressional, 110 House, and 38 Senate districts
- Consider public comments, including Communities of Interest
- Deliberations to determine which draft proposed maps will be presented for input during the 2nd round of public hearings



2nd ROUND OF PUBLIC HEARINGS



1

Solicit public comments regarding the proposed 161 districts.

2

Each proposed district plan shall include Census data, map, and legal description.

3

Constitution requires five public hearings, but the Commission elected to do nine.

2nd ROUND OF PUBLIC HEARINGS

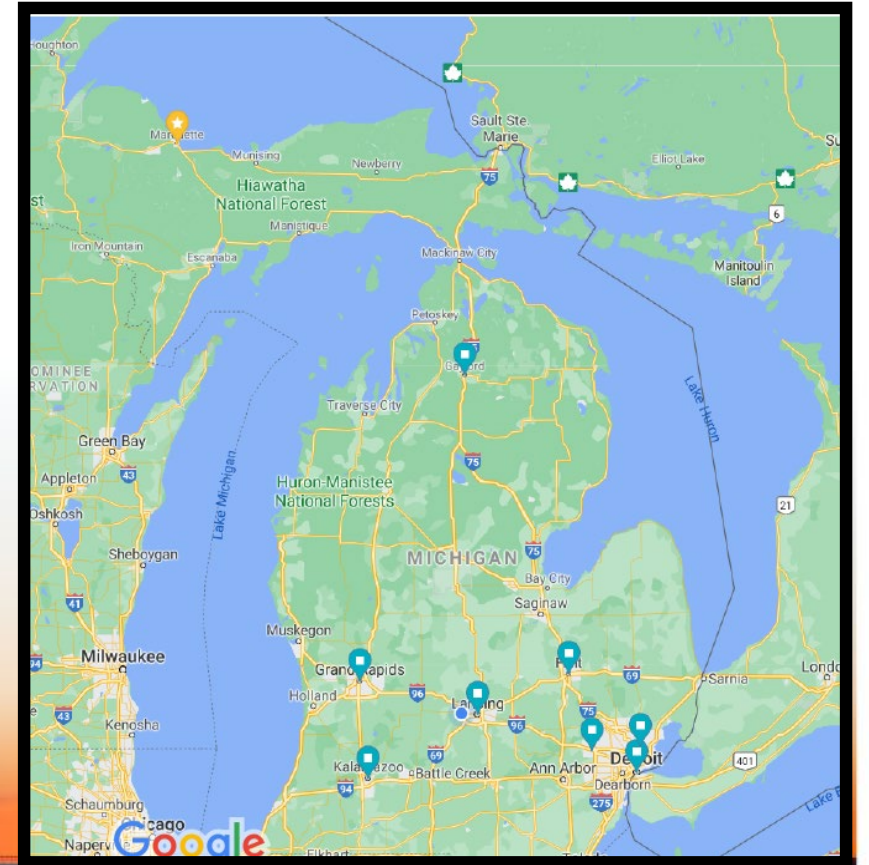


LOCATIONS

Monday, Oct. 11
The Dort Center
Flint

Tuesday, Oct. 12
Treetop Resorts
Gaylord

Thursday, Oct. 14
Northern Michigan University
Marquette



2nd ROUND OF PUBLIC HEARINGS



LOCATIONS

Monday, Oct. 18

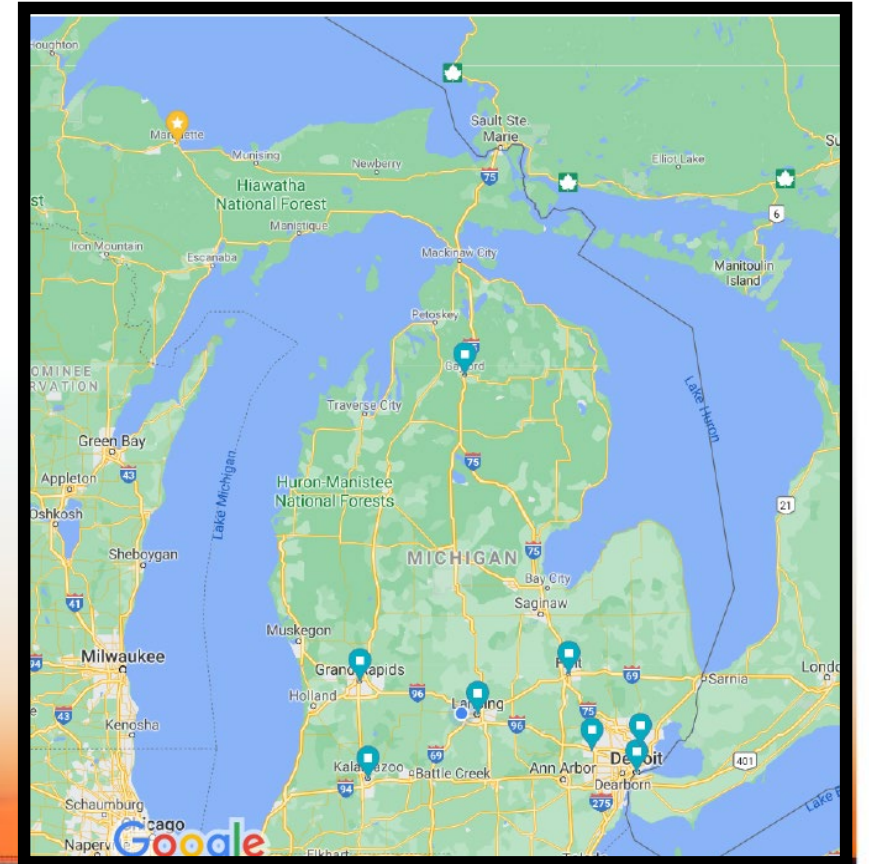
Amway Grand Plaza Hotel
Grand Rapids

Tuesday, Oct. 19

Radisson Plaza Hotel at Kalamazoo Center
Kalamazoo

Thursday, Oct. 21

Lansing Center
Lansing



2nd ROUND OF PUBLIC HEARINGS

LOCATIONS

Monday, Oct. 25

Macomb Community College

Warren

Tuesday, Oct. 26

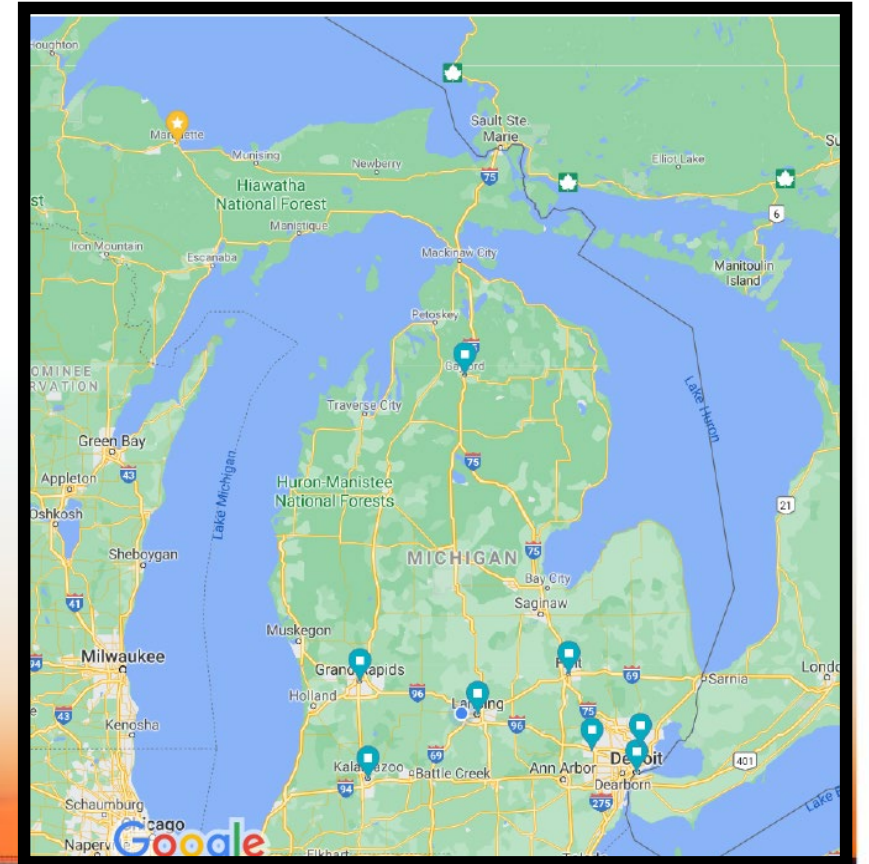
Schoolcraft College

Livonia

Thursday, Oct. 28

TCF Center

Detroit

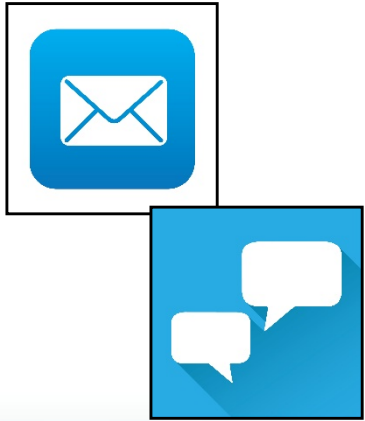


ADOPTING MAPS

- After the public hearings, more deliberations by Commission to develop Proposed Maps.
- Public Notice of each plan that will be voted on.
- At least 45 days for public comment.
- Vote to adopt final maps requires a majority vote that includes two members each who affiliate with the Democrats, Republicans, and neither the Democrats or Republicans for each map.
- Publish the adopted maps and the supporting material and data within 30 days.
- The maps become law 60 days after publication.



#ShowUpSpeakUp



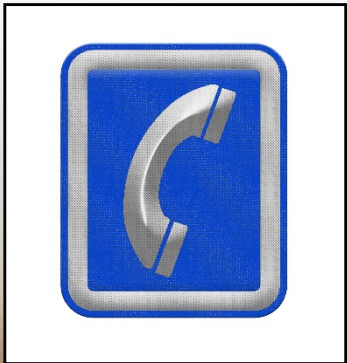
- Sign-up for email or text alerts at www.Michigan.gov/MICRC.
- Go to www.Michigan.gov/MICRC and click on the Proposed Draft Maps button to view and comment on any plan drawn by the Commission.



#ShowUpSpeakUp



- Mail public comments to MICRC/P.O. Box 30318/ Lansing, MI 48909.



- Call 1-833-You-Draw, that's 1-833-968-3729 for more information or to learn how to provide public comments at a regular meeting or public hearing.



#ShowUpSpeakUp



- Like and/or follow us on Facebook, Instagram, or Twitter @RedistrictingMI.
- Subscribe to the MICRC YouTube Channel.
- Submit public comments at www.Michigan.gov/MICRC.
- Attend any Meeting or a Public Hearing.